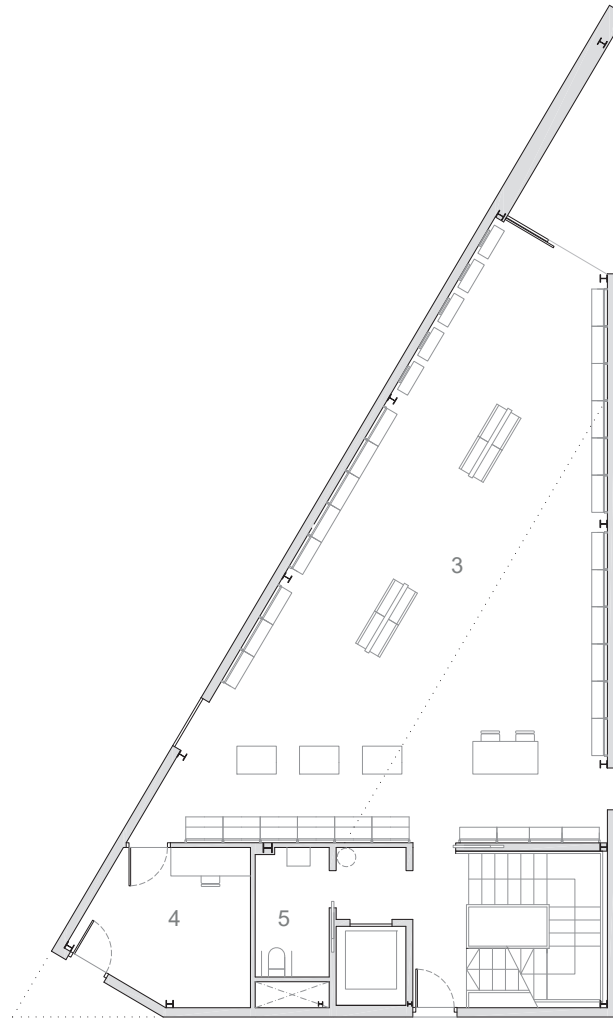
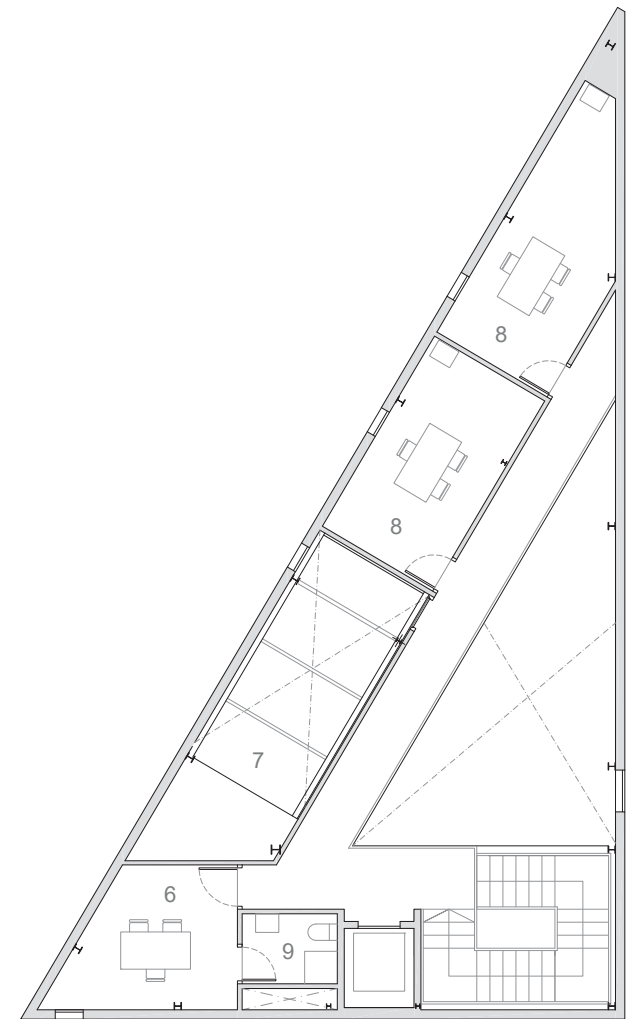


Basement



Ground floor



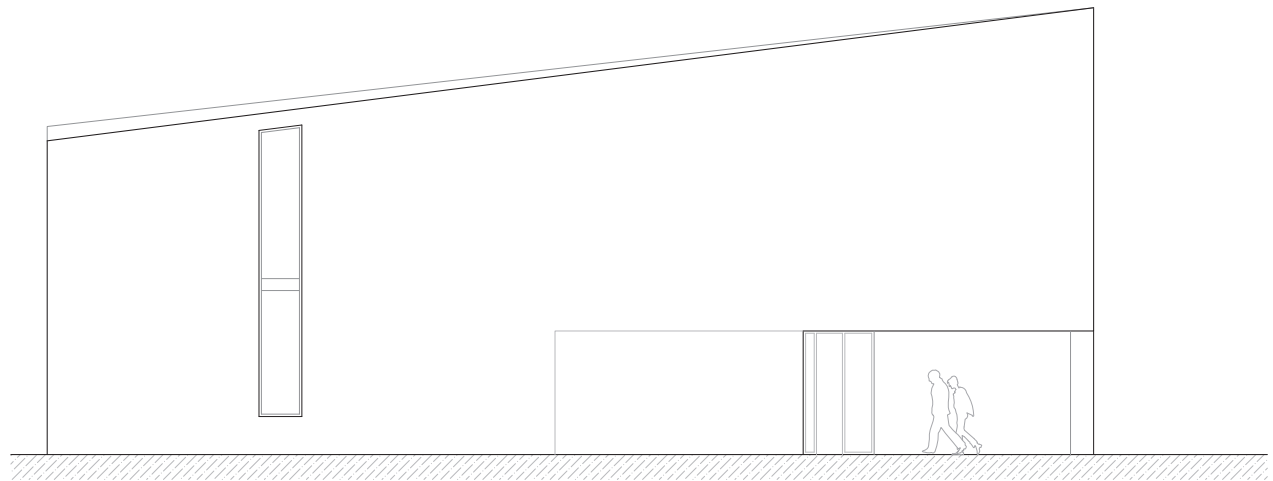
First floor

- 1. Technical room
- 2. Storage
- 3. Selling hall

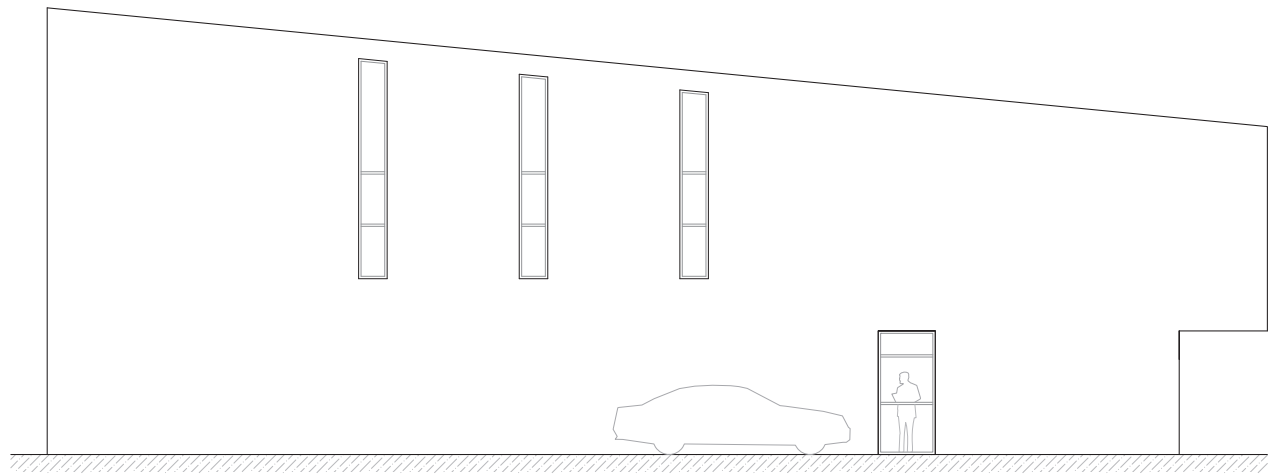
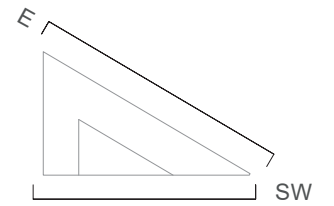
- 4. Pharmacy back room
- 5. Public toilet
- 6. Main office

- 7. Technical space for medicine-distributing robot
- 8. Offices
- 9. Private toilet

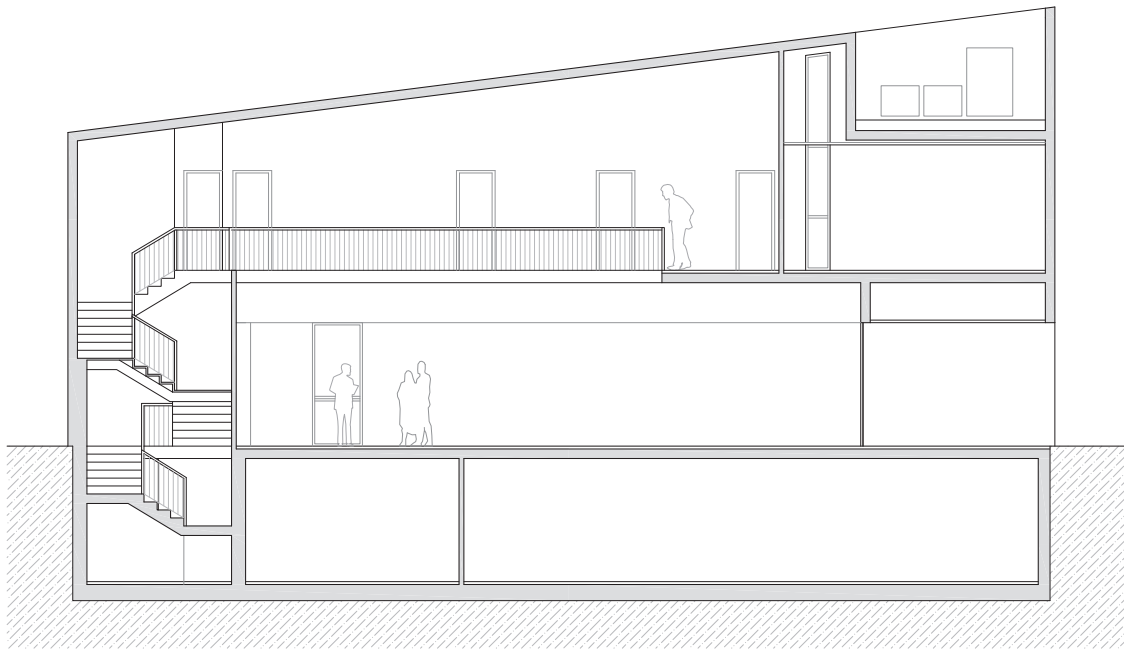




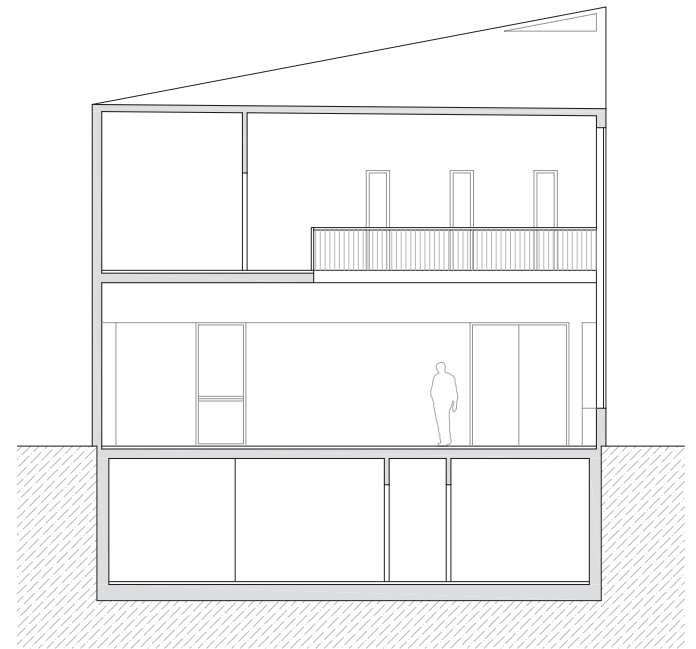
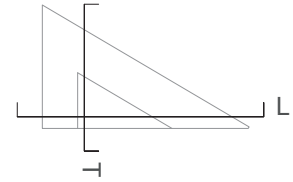
Southwest elevation



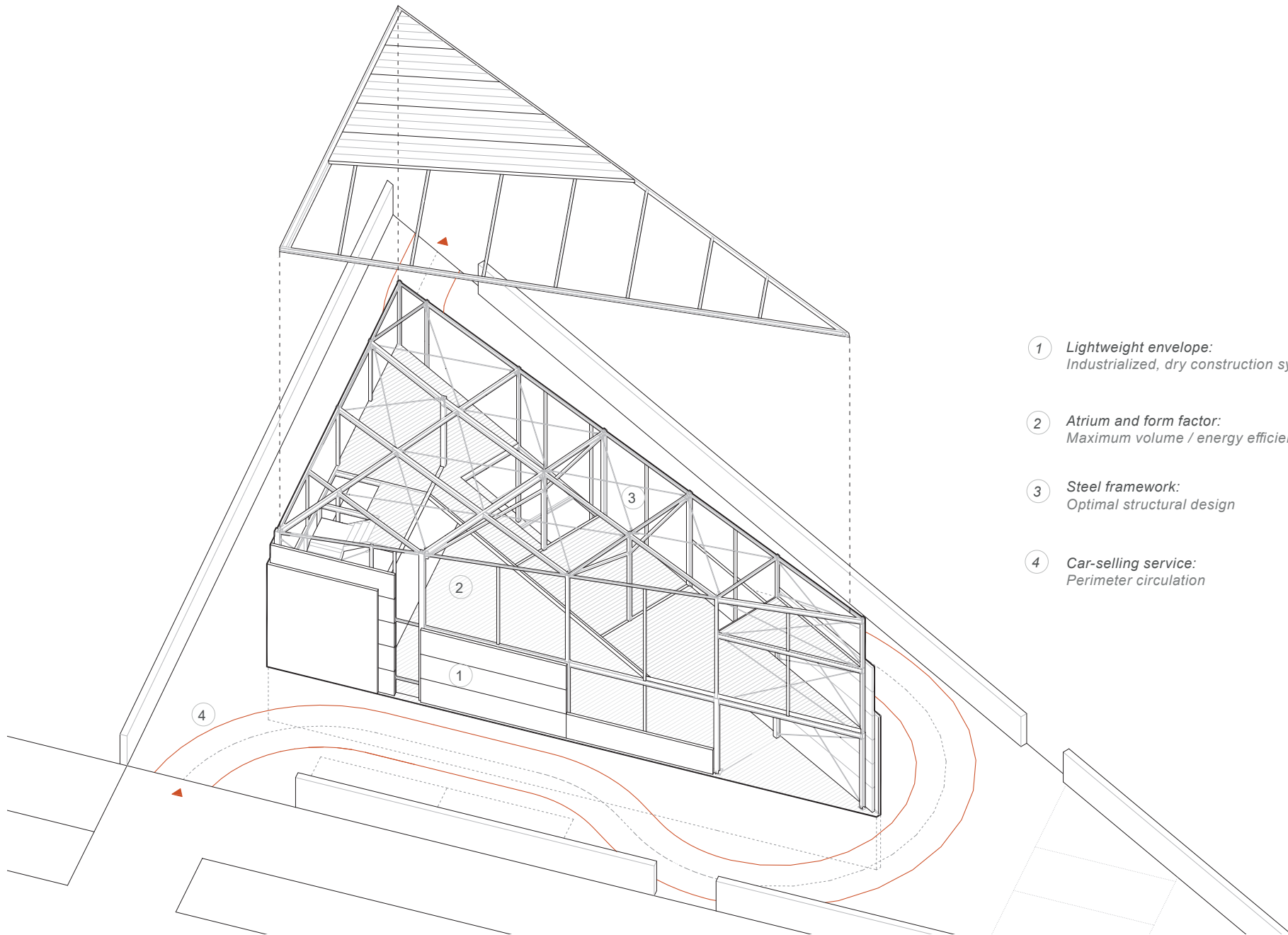
East elevation



Longitudinal section



Transversal section



- ① *Lightweight envelope:*  
*Industrialized, dry construction system*
- ② *Atrium and form factor:*  
*Maximum volume / energy efficiency*
- ③ *Steel framework:*  
*Optimal structural design*
- ④ *Car-selling service:*  
*Perimeter circulation*