

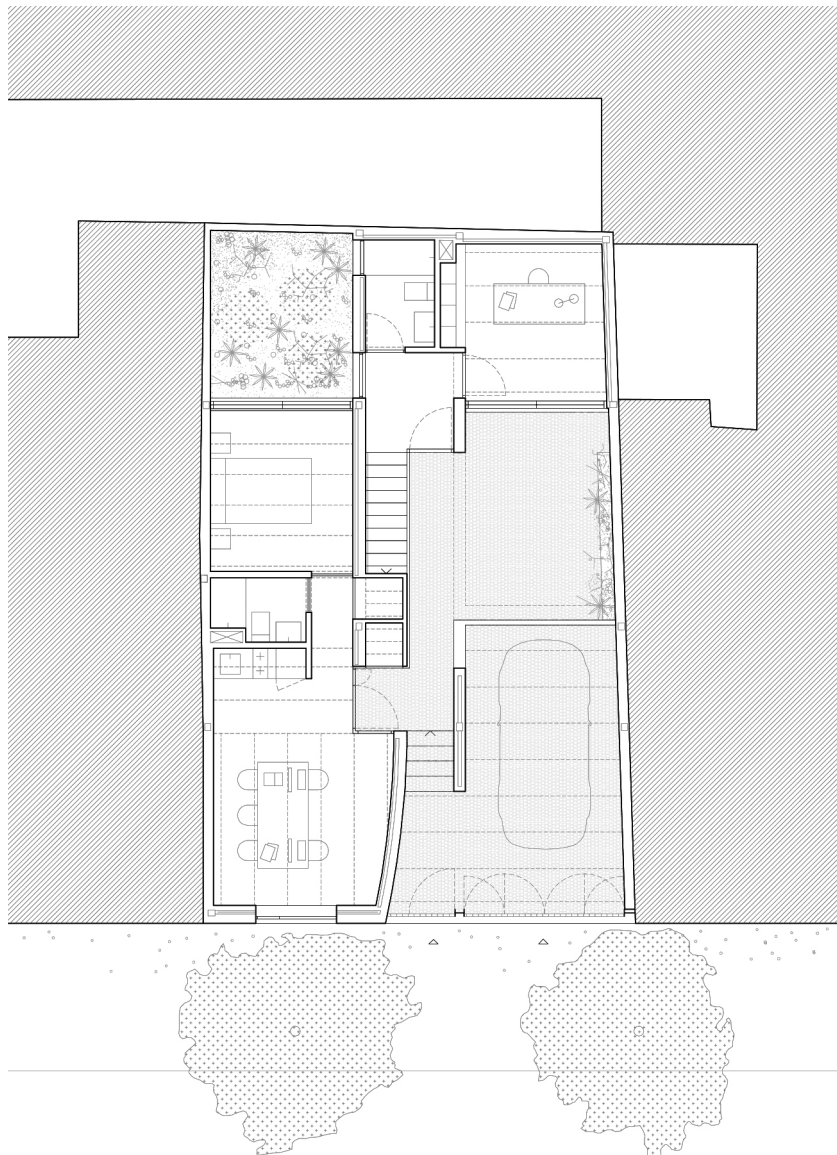
E 1:2000



***Casa Dos Patios y Medio***

Sol89. María González y Juanjo López de la Cruz

Sevilla

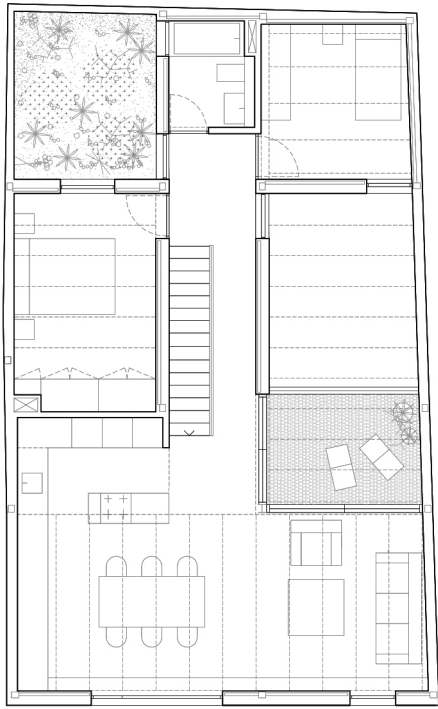
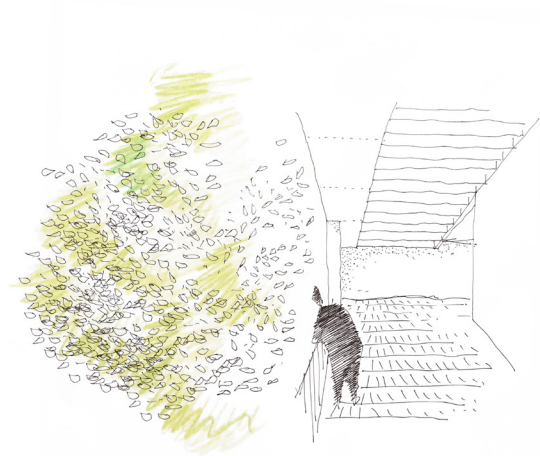


0 | | | | | | | | | | 5 m E 1:150

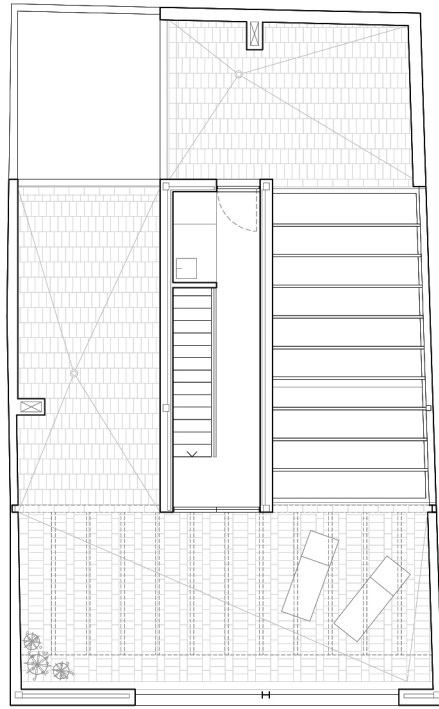
***Casa Dos Patios y Medio***

Sol89. María González y Juanjo López de la Cruz

Sevilla



planta primera +3.58



planta segunda +7.00

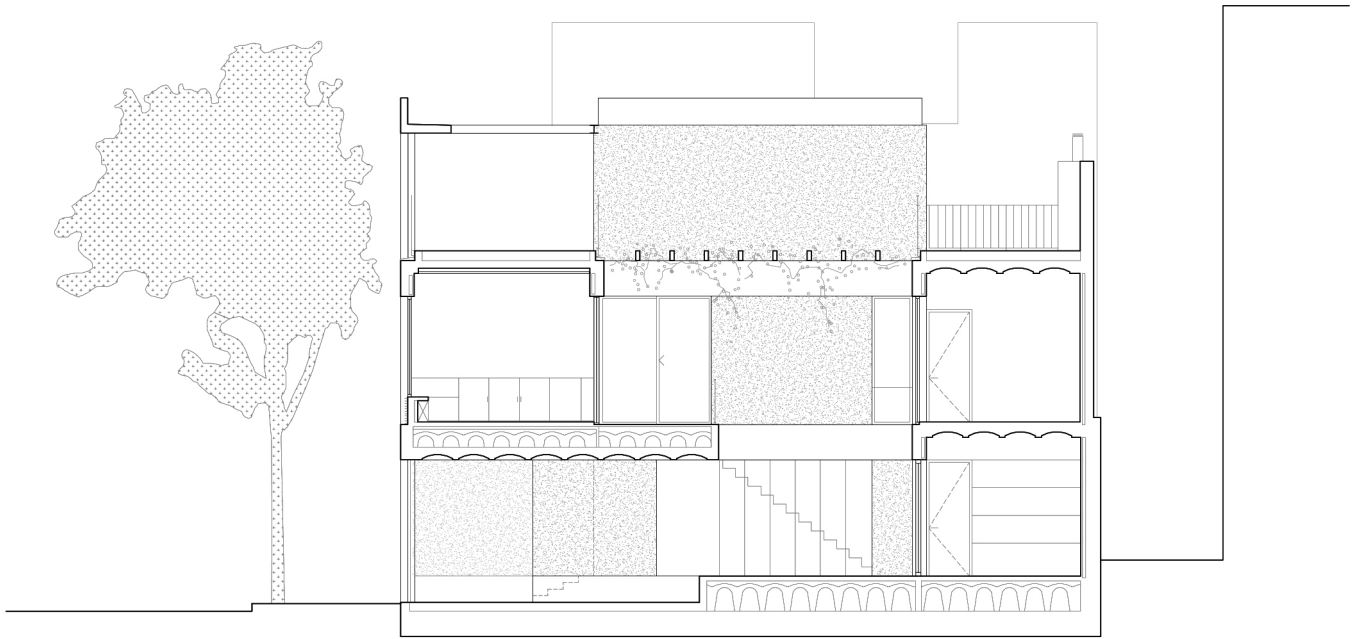


0 5 m E 1:150

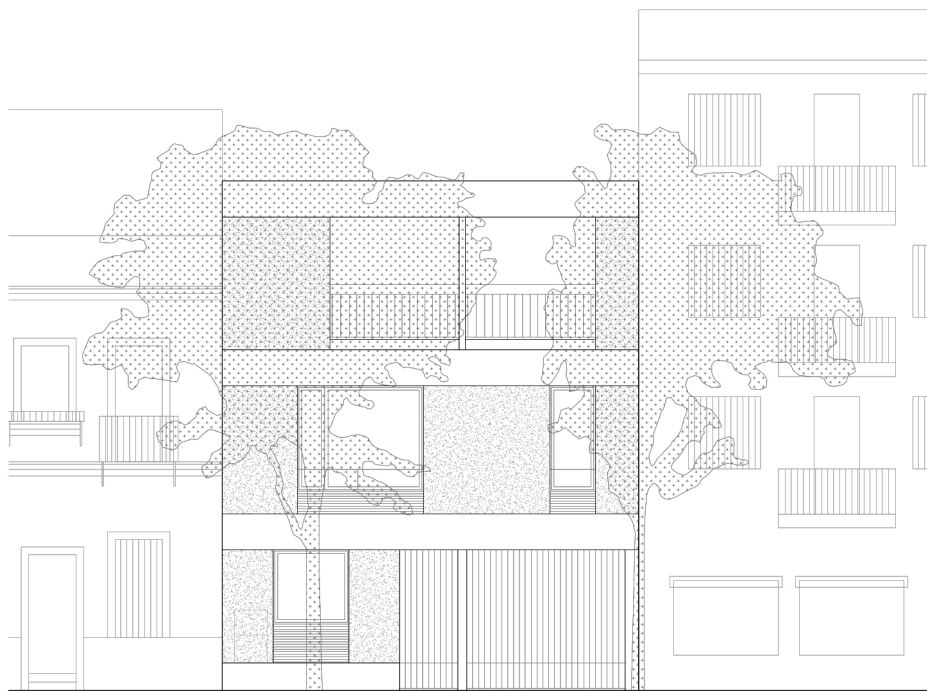
### *Casa Dos Patios y Medio*

Sol89. María González y Juanjo López de la Cruz

Sevilla



Sección longitudinal



Alzado principal



0 5 m E 1:150

### *Casa Dos Patios y Medio*

Sol89. María González y Juanjo López de la Cruz

Sevilla



***Casa Dos Patios y Medio***

Sol89. María González y Juanjo López de la Cruz

Sevilla