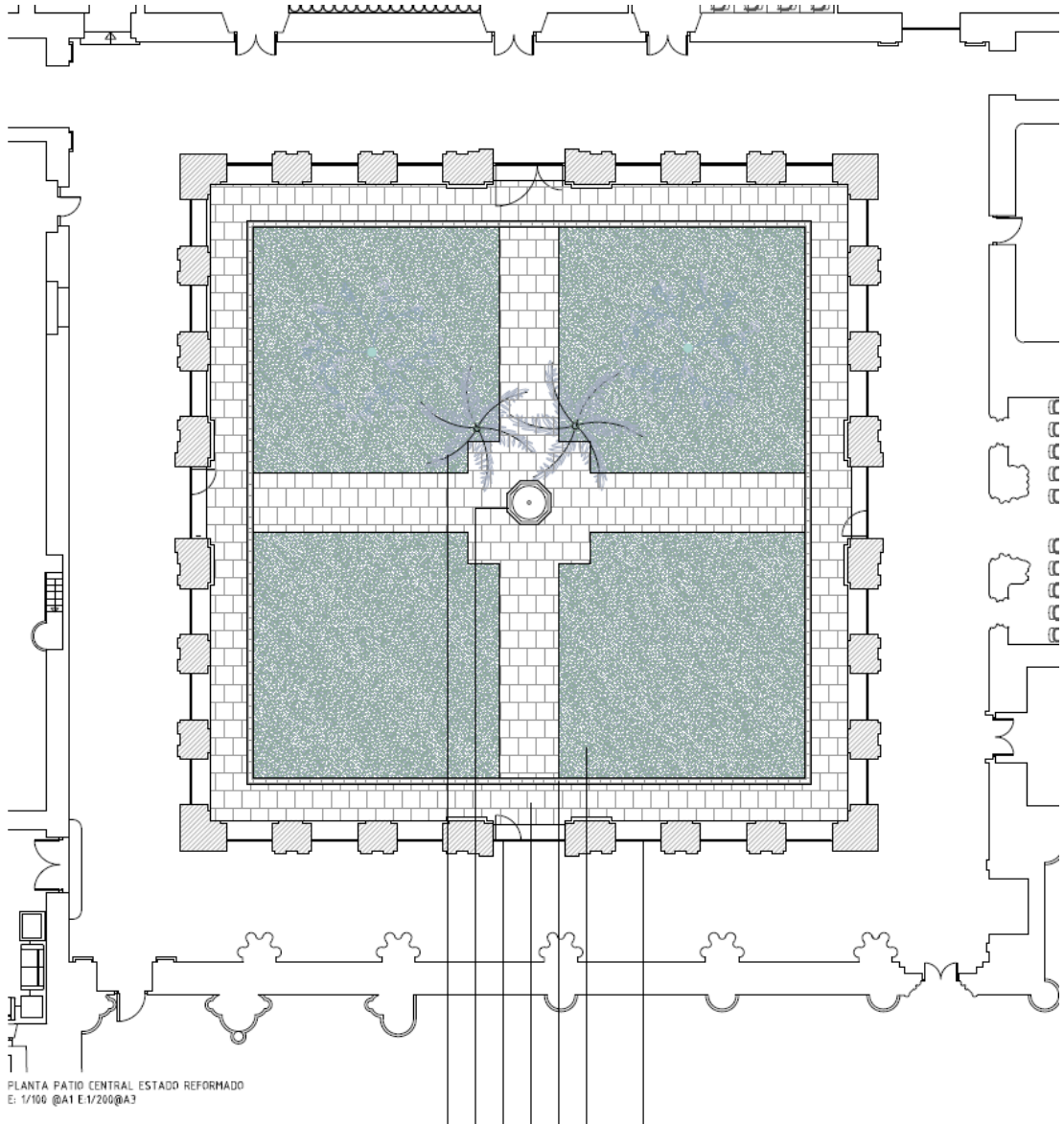


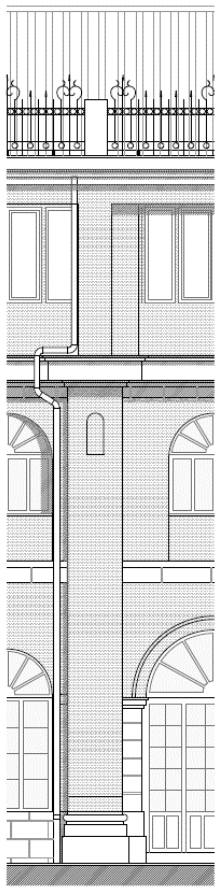
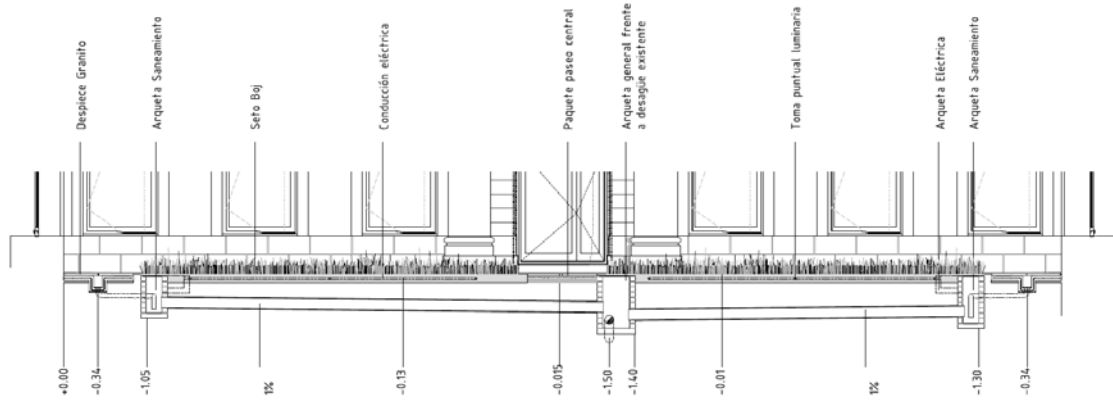
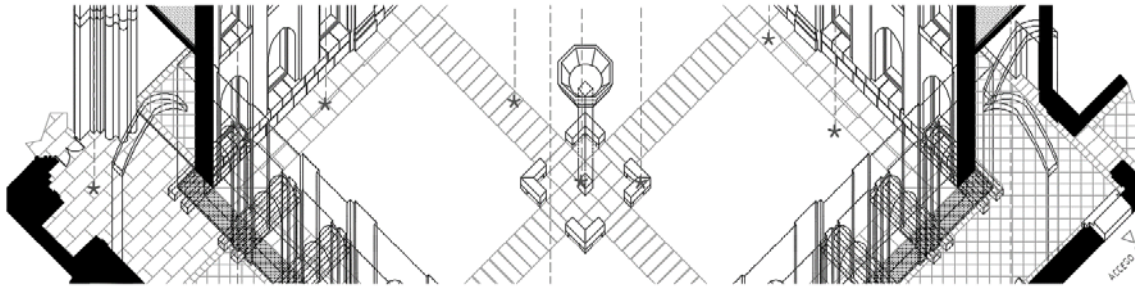
Rehabilitación del Campus de IE Universiti en Segovia por Serrano-Suñer Architecture Office. Plantas, alzados, secciones, detalles y axonometrías:



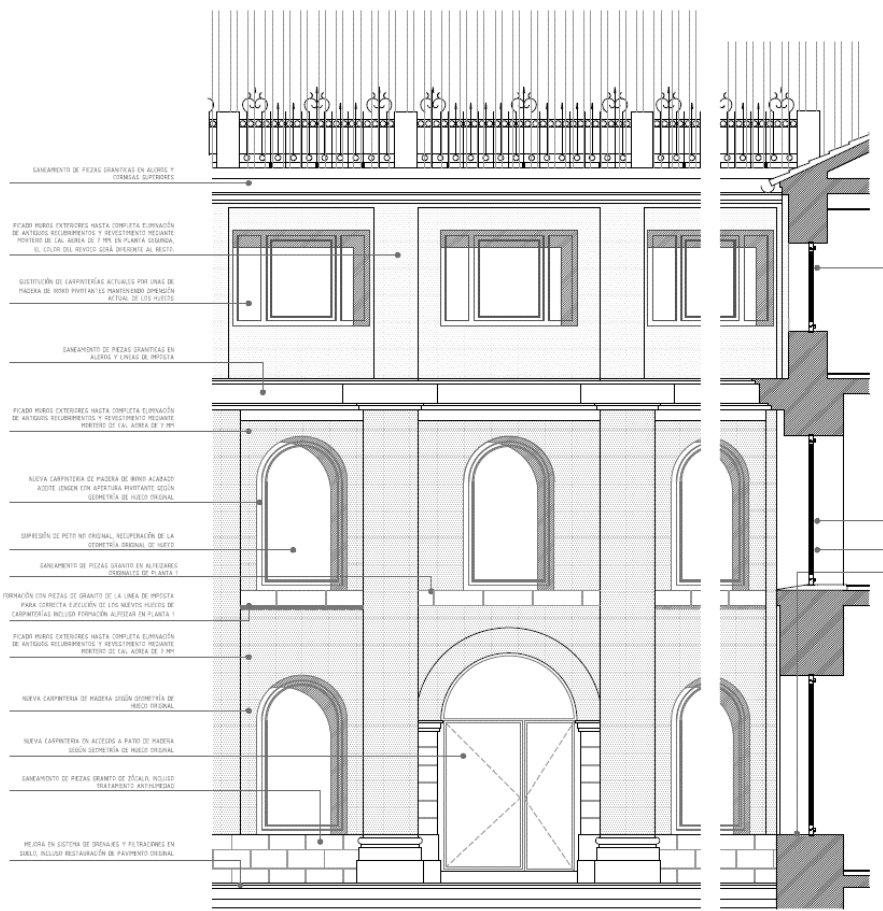
PLANTA GENERAL DE SITUACIÓN  
E. V54K @41E19/MAG03



PLANTA PATIO CENTRAL ESTADO REFORMADO  
E: 1/100 @A1 E.1/200@A3



DETALLE ALA NORTE ESTADO ACTUAL



DETALLE ALA NORTE ESTADO REFORMADO

